

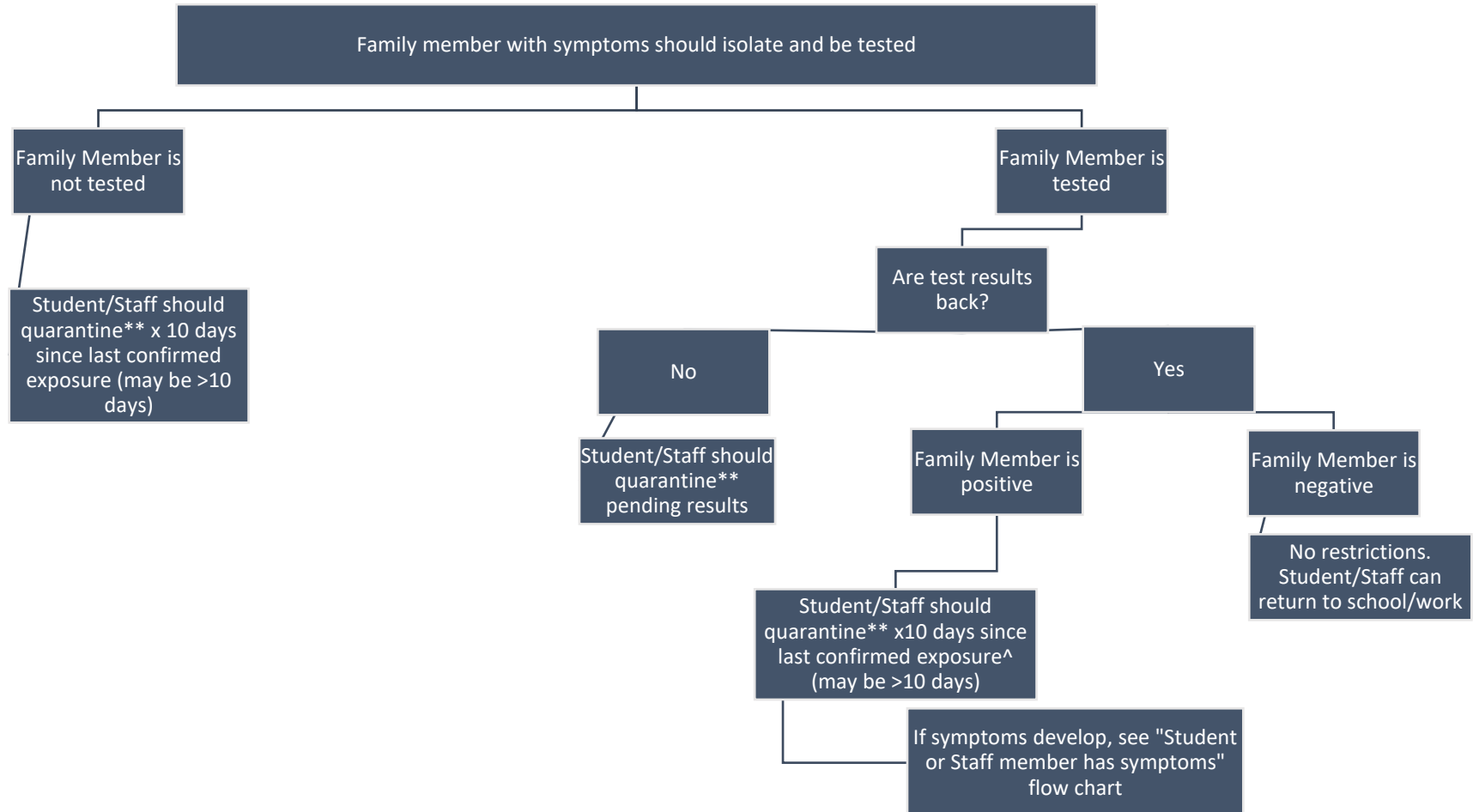


RIVER VALLEY SCHOOL & STAFF SYMPTOMS AND EXPOSURE PROTOCOL



STUDENT OR STAFF MEMBER HAVE NO SYMPTOMS BUT HAVE FAMILY MEMBER WITH SYMPTOMS

Staff should contact Human Resources (bkrey@rvschools.org or 608-459-5847) with questions about protocol.



*Home isolation instructions: Student/Staff to stay at home for at least 10 days from symptom onset/test collection date until symptoms have improved AND 24 hours fever free without the use of fever reducing medication.

**Quarantine instructions: Student/Staff to stay home for 10 days since last confirmed exposure.

^Confirmed Exposure: Student/Staff has received confirmation from his/her Primary Care Provider and/or County Health Department.